

A Research in Real Scenery Derived Pattern and the Virtual Design of Home Textiles

SONG Jingyuan^{[a],*}; WANG Yuqi^[a]; LI Daiyang^[a]

^[a]College of Textiles & Garments, Southwest University, Chongqing, China.

*Corresponding author.

Received 3 June 2015; accepted 4 August 2015
Published online 26 September 2015

Abstract

As an important form of artistic expression, real scenery derived pattern is a unique new pattern that possesses a special characteristic and eminently demonstrates natural real scenery. With an advantage of being real, it looks closer to nature. Combine the concept of real scenery derived pattern, this paper analyzes the real pattern creation techniques and shaping tactics, and fusion with home textiles, as well as personalized pattern innovation in home textile. It provides theoretical foundation for the study of real scenery derived patterns design in home textiles.

Key words: Pattern; Real scenery derived pattern; Home textile; Design

Song, J. Y., Wang, Y. Q., & Li, D. Y. (2015). A Research in Real Scenery Derived Pattern and the Virtual Design of Home Textiles. *Cross-Cultural Communication*, 11(9), 36-40. Available from: <http://www.cscanada.net/index.php/ccc/article/view/7512> DOI: <http://dx.doi.org/10.3968/7512>

INTRODUCTION

Worship and the dependency for the nature are from ancient times to nowadays for human. According to archaeological data, Chinese textile production custom had already sprouted in the Paleolithic age. Both ancient textiles and modern textiles cannot do without the creation of the real natural scenery.

In contemporary household life, as the closest material medium to the human mind and body, textiles are closely

related to human life (Dong, 2011). Textiles have different forms, types and styles that show different functions and purposes. How to choose the pattern is an important content in the textile design (Zou & Liu, 2010).

The majority of home textile patterns are originated in real life and collocate with the use of derivative patterns among which the real scenery pattern is most widely adopted. This is mainly because that natural and healthy lifestyle has become people's goal of pursuit. People's desire for contact with nature is more intense, and they want to be closer to nature when real scenery pattern meets the need. Thus, people have formed aesthetic habit of nature over a long period of time.

1. REAL SCENERY DERIVED PATTERN

1.1 Overview

The word "Derived" means to produce from evolution, the new material obtained from the parent substance (for example through the method of substitution or hydrolysis).

The word "pattern" originates from Japanese scholars' translation for Western decoration. The art fascicule of the dictionary "Word Sea" explains "pattern" as construction scheme draft that designed before fabrication processing for the modeling structure, color and emblazonry of some utensils. In other words, the pattern means figure or shape that decorates something (Liang, 2012). Therefore, pattern is always applied in life as a decoration. Pattern itself is also decorative and aesthetic. As one of the pattern styles, real scenery pattern means real scenery patterns obtained from nature.

Real scenery derived pattern mainly refers to patterns obtained from the proper transformation of the natural images in the original scenes through people's aesthetic and artistic expression of perception and creation. The pattern mainly extracts all things in nature as the theme. It mainly shows structures without regulation. The feature

is practical and decorative and it is not imagination but new derived pattern created according to the real scenery impression and characteristics.

1.2 Classification

Real scenery derived pattern is relative to real scenery pattern. According to the book “A history of Chinese decorative pattern”, we can learn that from the primitive times, people have already begun taking the dermatoglyphic pattern of animals and plants as design resources in textiles. Modern home textile patterns mainly adopt flowers, birds, insects, plants and other elements (Tian, Wu, & Tian, 2003). Therefore, in accordance with material, the real scenery pattern can be divided into three categories: scenery pattern, animal pattern, plant pattern. In scenery pattern, mountains, gardens, rivers, trees and other elements can be used as its derivative elements. Plant pattern usually includes flowers, fruits and other elements.

2. THE DESIGN OF DERIVATIVE METHOD

The inspiration of Real scenery derived pattern comes from all things in nature. In the design creation of derivative method, pure real scenery pattern needs to derive into new image and you can use the following creative thinking: The first way is imitating real scenery thinking mode. As the most primitive way of creation and earliest originated and longest continued, imitation is still one of the most primitive thinking of modern pattern creation. The second way is divergent thinking mode. For example, creations by imagination and association on the basis of morphology, culture, thinking and other features presented or implied by real scenery. The third way is the composite thinking mode. It is common composite by a variety of thinking modes which is mainly reflected in the creation of traditional arts and folk patterns.

Under the guidance of creative thinking, the modeling techniques of real scenery to its derived pattern can be summarized as follows. First, real scenery’s shape and contours of the structure are drawn with simple lines and real scenery objects are filtrated and purified, highlighting the features of natural beauty. Second, adding elements in pattern meaning and decorative expression. Third, to seize recognizable real scenery pattern features, color, shape and other elements and proceed artistic expression like exaggeration. Fourth, combine different patterns together and create a new image through imagination. Fifth, by coincidence or under designer imagination, connect two or more patterns together to produce a new special shaped pattern. Sixth, by anthropomorphic approach the objects will be more vivid or cordial, mostly used in real scenery pattern performance of the animal. Seventh, the method of

gradually varied makes pattern rich in content and rhythm. Pattern formed by these techniques has a certain artistic decorative effect, while covering the scenery expressed by the original real scenery pattern.

Animal pattern may be formed by the art methods of exaggerating or cartooning one of its parts or characteristics. For example, pattern in Figure 1 is derived from real scenery animals –crocodile and the pattern is obtained by exaggerating its horns. It has many colorful animal elements and little lovely feet in the edge. Formation of plant Pattern in Figure 2 includes disintegration, assembly, simplification, accretion and other aspects. Refining the contour of the plant pattern or disintegrating to form a new image or rearranging to form a new constitution, making its form more plentiful (Yu, 2008). But it should be noted that you should obtain different postures of flower bud, in early puberty and half open and full open from various angles and different time when selecting materials.

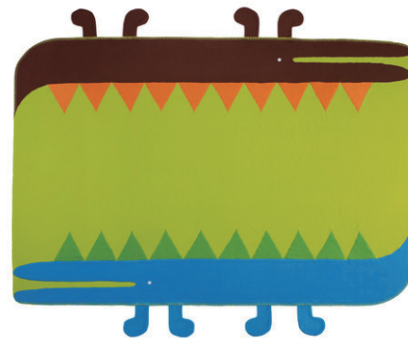


Figure 1
The Derived Pattern From Real Animal



Figure 2
The Derived Pattern From Real Flowers



Figure 3
The Derived Pattern From Scenery



Figure 4
The Derived Pattern From Paper-Cut

Scenery patterns have various forms of performance techniques, all the real scenery textures can be expressed by different skin texture, as shown in Figures 2-3, oil painting method is used to express fine, soft or impact of real scenery in pattern design.

There is also a paper-cut pattern to express Chinese traditional culture, shown in Figure 4. The pattern has a long history and it extracts various elements with different kinds of forms from real life. It can be enriched by the way of stacking and adding. It not only contains a long history and customs but also demonstrates a modern society personality. It has a direct and practical significance to future fashion trend and guides the development of textile products (Xu, 2012).

3. REAL SCENERY DERIVATIVE PATTERN AND HOME TEXTILE

Creation and application of Real scenery derivative pattern in home textile and its artistic style and expression



Figure 5
Scroll Design



Figure 6
Hydrangea



Figure 7
The Integration of Real Scenery Derivative Pattern and Bedding

Curtain pattern design and real scenery derivative pattern: Curtain is indispensable in household life. Curtain is one of the important parts of the sitting room and bedroom design. It has the function of protecting privacy, keeping out the light, attracting and reducing noise. In modern life, the curtain also has played a role of decoration and partition. The pattern design of curtain determines the aesthetic of the whole household, so the design of the curtain is colorful. Figure 8 is the autumn

forms have a major impact on the family environment. Real scenery derivative pattern can decorate home environment according to different decorative styles, thus reflecting the integration of real scenery derivative pattern and home textiles.

Bedding pattern design and real scenery derivative pattern: bedding is the most widely used in home textiles; it includes matting, cover, pillow, etc.. Bedding design often expresses visual sense through the unified design style. The unified style design has played a very important role in the indoor environment. As the behavior of praising naturalism being boosted, real scenery derivative pattern is more and more used in bedding design. What holds the largest percentage is flower type. Figure 5 takes the flowers and plants such as peony, honeysuckle, lotus for the "S" shape wave curve arrangement, after the processing, the two sides continuous pattern is formed. The modeling of flowers and plants are from floral scroll (Zhang, 2008). Figure 6 shows a hydrangea flower painting works from natural real scenery. In Figure 7, pattern of positive bedding bag combines hydrangea, green leaves with floral scroll as the main part, revealing the implicit pattern. The opposite of bedding bag combines pink, green lattice pattern with small embroidered ball, floral scroll and green leaves in the middle of lattice to form a new pattern. The color is lovely. Green stripe and bright color of the flower makes the overall effect natural and smooth. The user can choose either side according to interior decoration, weather, or mood. It has stronger functional and artistic quality.

scenery in nature, taking a picture of it to form a new pattern. Figure 9 is leaves taken in nature, contacting these two elements with the technique of describing outline and drawing feature to apply it in the curtain pattern design in Figure 10. Application of three-dimensional offset printing technology makes the pattern gradation richer. With golden color, a quiet autumn scenery is built. It seems that drawing the curtains brings you a mysterious smell. Transparent gauze fabrics projects on indoor with

sunlight, just like another adornment picture with a strong sense of decoration. Alternating reality with imagination,

it feels like living in a real world. The overall effect of the curtain makes it more peaceful and natural.

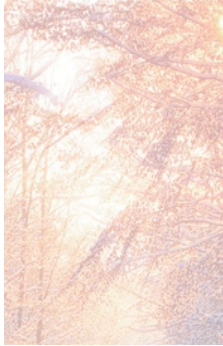


Figure 8
Branches



Figure 9
Leaves



Figure 10
**The Integration of Real Scenery
Derivative Pattern and Curtains**

Household cloth art and real scenery derivative pattern: real scenery derivative pattern can be used in the design of any home textiles, such as sofa fabric, cup mat, tablecloths, back cushion fabric, etc.. Although these tiny household cloth occupies not largely in the whole decoration environment, these tiny styles still play an important role in the household environment. Home textile pattern design must collocate with the whole indoor environment. Figure 11 is a photo of “Notre Dame DE Paris”. Figure 12 shows applications of the real scenery on

pillow. New patterns are added in meaning and expression of decoration. The grey-white image expression draws the outline of French style of the Notre Dame DE Paris. The mottled tree shadows, sights by the Seine River, flowing clouds, wherries, grey white color exhales nostalgic glows. The embroidery demonstrates the charm of oil painting and shows a distinctive flavor. When users hold the cotton pillow as if they themselves are in Paris, this kind of household items make customers feel natural scenery and traditional history and culture of France.



Figure 11
Notre-Dame De Paris



Figure 12
**The Integration of Real Scenery Derivative
Pattern and Pillows**

4. APPLICATION OF REAL SCENERY DERIVATIVE PATTERN IN PERSONAL HOME TEXTILE

The picture of Lily shown in Figure 13 is used to develop more patterns in home textile with a new fiber art technique called color weave just shown as Figure 14. Compared with the original manuscript, this new fiber art- color weave fabric of real scenery Lily has high simulation and strong sense of image reality. It can well restore the original stereo structure of the pattern. At the same time, color weave is wear-resisting, durable, washable and it avoids being blemished by the dye and

fading. Thus making real scenery derivative pattern perform its structure such as texture and dermatoglyphic pattern more perfect and gain a visual effect that surpasses the original real scenery and has high simulation (Yan, 2013).

Figure 15 shows a cup mat of color weave fabrics used in home life. Real scenery in nature being used in home textile shows the integration of new life, art, nature and fashion. Making the color weave fabric of lily into a cup mat, the cup mat made of lily color weave fabric with green baffeta for joint brings people a rural natural flavor. Color weaves artwork full of art artistic temperament has not only practicability but also decorative beauty. Every textile makes you feel the natural fragrance.



Figure 13
Lily



Figure 14
Color Weave



Figure 15
A Cup Mat of Color Weave
Fabrics

CONCLUSION

As an important artistic expression form, real scenery derivative pattern is not only with high innovation design technique but also a vital part of the home textile pattern design. The integration of real scenery derivative pattern and home textiles is a development trend in home textile industry. Real scenery derivative pattern searches for the original ecology images for us and provides a good way of pattern design in the home textile industry.

REFERENCES

- Dong, Y. Z. (2011). *Pattern style integration in modern textile design*. Qingdao University.
- Liang, S. T. (2012). *First exploration of natural image pattern textile design*. China Academy of Art.
- Tian, Z. B., Wu, S. S., & Tian, Q. (2003). *A history of chinese decorative pattern* (p.11) High Education Press.
- Xu, C. C. (2012). *Practical inquiry of paper-cut pattern in modern home textile*. Donghua University.
- Yan, X. C. (2013). Feasibility of color weave applying in home textile. *Progress in Textile*, (1), 9-12.
- Yu, X. H. (2008). Extraction and analysis of furniture carve pattern in Ming and Qing Dynasty. *Furniture*, (5)
- Zhang, Y. J. (2008). *A permanent symbol of art- floral scrolls*. Liaoning Normal University.
- Zou, Q. H., & Liu, N. (2010). Pattern collocation design of pastoralism home textile. *Modern Silk Science and Technology*, (4).